

Packaging



BELT CORPORATION
OF AMERICA

OEM Quality Belts for Vertical Form-Fill-Seal Machines



www.beltcorp.com

Vertical Form-Fill-Seal Belts



BCA Produces

- OEM quality belts for Vertical Form-Fill-Seal machines
- Standard OEM replacement belts for all major manufacturers
- Homogenous molded covers that provide uniform wear surfaces free of hard spots to increase performance
- Covers without any splices or seams for increased reliability
- Continuous durable wearing covers that provide consistent friction for their entire life
- Non-glazing compounds offering excellent grip and slip prevention
- Excellent abrasion resistance for an increased trouble-free lifespan
- Excellent flexibility without cracking or tearing
- CNC equipment used to machine holes, slots, grooves, and profiles within precise tolerances for excellent performance
- See a selection of our standard parts on the next page

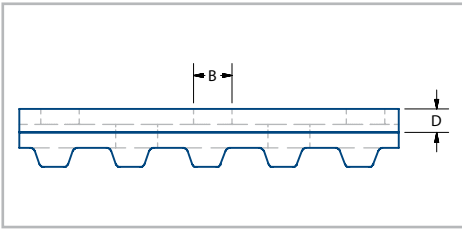
OEM Part Number Reference

Manufacturer	Part Number	Size	BCA Part Number	Cover	Belt Type	Slots	Holes	Groove
Bosch	8101825307	50T10-920	50T10-920 UK R-A	Red	Timing	Diagonal	X	X
	8101825308	50T10-920	50T10-920 UK F1	Yellow	Timing	Diagonal	X	X
	8101844583	50T10-920	50T10-920 UK F2	Yellow	Timing	Diagonal	X	X
	8101845161	50T10-920	50T10-920 UK F	Yellow	Timing	Horizontal	X	X
	8101857314	50T10-920	50T10-920 UK R-B	Red	Timing	Diagonal	X	X
	8101871823	30T10-920	30T10-920 UK R-A	Red	Timing	Diagonal	X	X
	8101871824	30T10-920	30T10-920 UK R-B	Red	Timing	Diagonal	X	X
Eagle	700370	32.50" x 2.625"	GB-32.5R-PS	Red	Flat	Diagonal	X	N/A
	700724R2	835-5M-60	835-5M-60-MB-P	Blue	Timing	Horizontal	X	X
Fres-co	SS53149	285L100	285L100 NG-MG-H	Tan	Timing	None	X	None
Fuji	GB109001	40-S8M-632	40-S8M-632	Multiple	Timing	None	X	X
		40-S8M-560	40-S8M-560	Multiple	Timing	None	X	X
Hayssen	10197A0530	720-8M-30	720-8M-30	None	Timing	None	None	None
	10197A0534	1040-8M-30	1040-8M-30	None	Timing	None	None	None
	10197A0540	27.875" x .245"	GB-27.875RX.9375	Red	Flat	None	None	N/A
	10197A0540A	27.875" x .245"	GB-27.875-FIR	Red	Flat	None	None	N/A
	10197A0560	27.875" x .245"	GB-27.875BX.9375	Blue	Flat	None	None	N/A
	10197A0561	23.875" x .245"	GB-23.875BX.9375	Blue	Flat	None	None	N/A
	10197A0562	280XL043	280XL043 UP DDO	Orange	Timing	None	None	None
	10197A0587	280XL093	280XL093 UP DDO	Orange	Timing	None	None	None
	10197A0615	280XL043	280XL043 NG-MR	Red	Timing	None	None	None
	10197A0616	280XL093	280XL093 NG-MR	Red	Timing	None	None	None
	101A12385	340XL081	340XL081 UK DDHB-G-P	Orange	Timing	None	X	X
Ilapak	CM17000003	270L100	270L100 NG-MG276	Tan	Timing	None	None	None
	CM17000015	50T10-530	50T10-530 UK-LPG	Red	Timing	Diagonal	X	X
	CM17000028	50T10-440	50T10-440 UK-MB35	Blue	Timing	None	None	None
	CM17000045	25T10-560	25T10-560 US MB35	Blue	Timing	None	None	None
Ishida	51-4896-17	255H150	255H150 NG-MR-P1	Red	Timing	None	X	X
Kliklok	013756P	240XL150	240XL150 NG-PG3	Tan	Timing	None	None	None
	P0041767	240XL150	240XL150 UP DD	Orange	Timing	None	None	None
	83739	320XL150	320XL150 NG-MR-G	Red	Timing	None	None	X
	077186	320XL150	320XL150 UPDD-P	Orange	Timing	None	X	X
	077187	320XL150	320XL150 UPDD-G	Orange	Timing	None	None	X
	92930	32T10-610	32T10-610 UPDDY	Yellow	Timing	None	None	None
Matrix	16501	800-5M-25	800-5M-25-ML	Linatex®	Timing	None	None	None
	17097	890-5M-25	890-5M-25-ML	Linatex®	Timing	None	None	None
	57684	340XL175	340XL175 UP DDO-P	Orange	Timing	None	X	X
Pacmac	9211-0019	27.875" x .245"	GB-27.875TX.9375	Tan	Flat	None	None	N/A
Rovema	1.010.04.2.018.23.4	50T10-630	FFS-A	Multiple	Timing	None	None	X
	1.010.04.2.137.23.3	50T10-630	FFS-G	Multiple	Timing	None	X	X
	1.010.04.2.138.23.4	29T10-630	FFS-B	Multiple	Timing	None	None	X
	1.200.04.1.047.00.4	50T10-630	FFS-I	Multiple	Timing	None	None	None
	1.207.04.1.002.00.3	50T10-630	FFS-E	Multiple	Timing	None	X	X
	1.207.04.1.014.01.3	30T10-630	FFS-H	Multiple	Timing	None	X	X
Sandiacre	1226BL	225L093	225L093 NG-MR	Red	Timing	None	None	None
	BA137200	270L098	270L098 NG-MB-PS-A	Blue	Timing	Diagonal	X	X
	BA137200	270L098	270L098 NG-MB-PS-B	Blue	Timing	Diagonal	X	X
TNA	2930-6	367L050	367L050 NG-MBK-P	Black	Timing	None	X	None
Triangle	03326-05	340XL180	340XL180 UP-DSP	Orange	Timing	Diagonal	X	X
	03326-06	340XL175	340XL175 UK DDO-P	Orange	Timing	None	X	X
	12385	340XL081	340XL081 UK DDHB-G-P	Orange	Timing	None	X	X

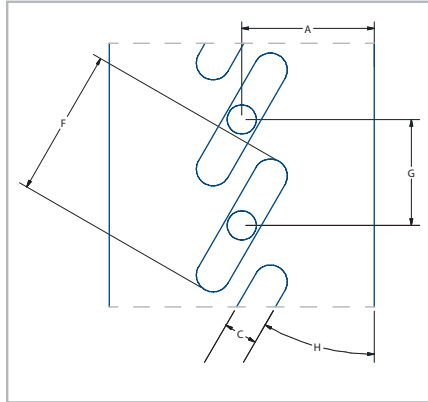
Additional parts and details
available at www.beltcorp.com/FFS

Specifications

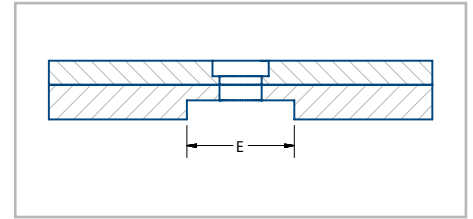
Belt Corporation of America has been manufacturing OEM and custom packaging belts for the vertical Form-Fill-Seal segment since 1985. Our customer service representatives and engineering team work in tandem to provide solutions to your belting needs with unsurpassed quality. The following information is a reference to help better identify your current belts and future needs.



Side view of teeth



Routed slots with holes



Groove ground on the tooth side

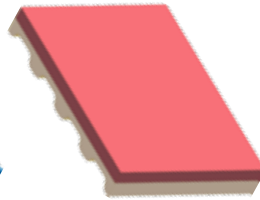
Types of Covers



Dark Green
Millable Urethane



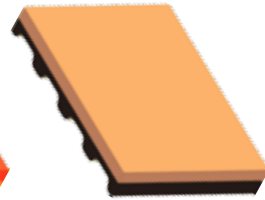
Blue Natural
Rubber



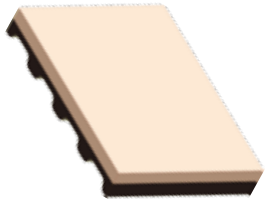
Linatex®



Dual Durometer
Orange Urethane



Orange Natural
Rubber



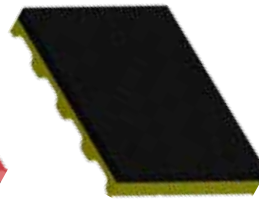
Tan Gum
Rubber



Yellow Foam



Red Natural
Rubber



Black Natural
Rubber

Belt Corporation is an ISO 9001:2000/2008 certified company and a member of the National Industrial Belting Association (NIBA), the Power Transmission and Drive Association (PTDA), and the Snack Food Association (SFA).



**BELT CORPORATION
OF AMERICA**

253 Castleberry Industrial Drive
Cumming, GA 30040
1.866.851.4455
www.beltcorp.com
sales@beltcorp.com